



# GAPGUARD™

FIRE DOOR GAP SOLUTIONS



FIRE DOOR COMPLIANCE

# Simpler, Smarter and Safer

NGP'S UL CERTIFIED 90-MINUTE FIRE DOOR GAP SOLUTIONS WILL HELP YOU AVOID THE COST, LABOR AND DISRUPTION OF REPLACING EXISTING STRUCTURES TO ACHIEVE COMPLIANCE. WHETHER AT THE HEAD, JAMB OR DOOR BOTTOM, EXCESSIVE GAPS PUT LIVES AT RISK. NGP'S GAP90™ (HEAD/JAMB), 9590 (BOTTOM) AND 9990 (TOP) HAVE YOU COVERED FROM EVERY ANGLE.

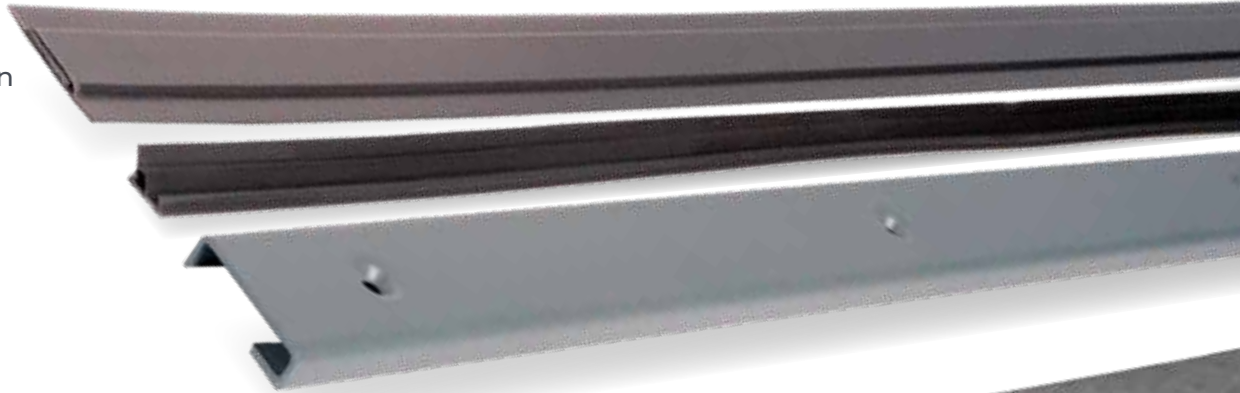


# GAPGUARD™

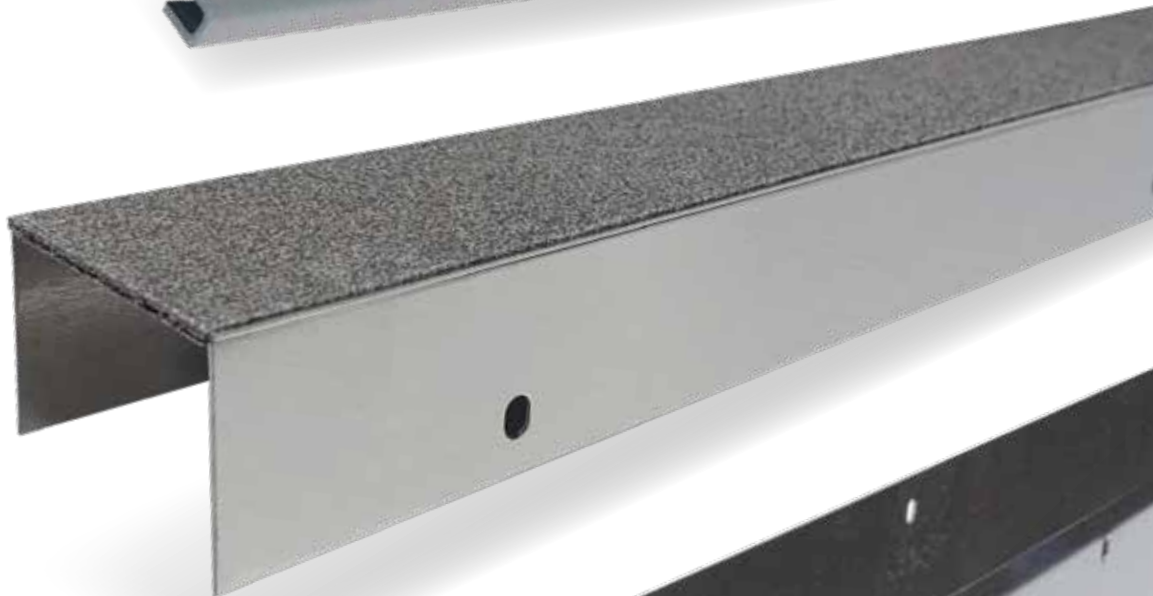
FIRE DOOR GAP SOLUTIONS

---

**GAP90™**  
Head/Jamb  
Gap Solution



**9990**  
Door Top  
Gap Solution



## FEATURES

- ◆ UL Certified for up to 90 Minutes
- ◆ Aesthetically pleasing
- ◆ Easy to install
- ◆ Economical
- ◆ Requires no special fabrication or fitting
- ◆ Available in stock sizes
- ◆ Ships within days
- ◆ NGP customer service
- ◆ Non-handed solutions

**9590**  
Door Bottom  
Gap Solution

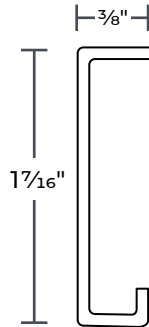
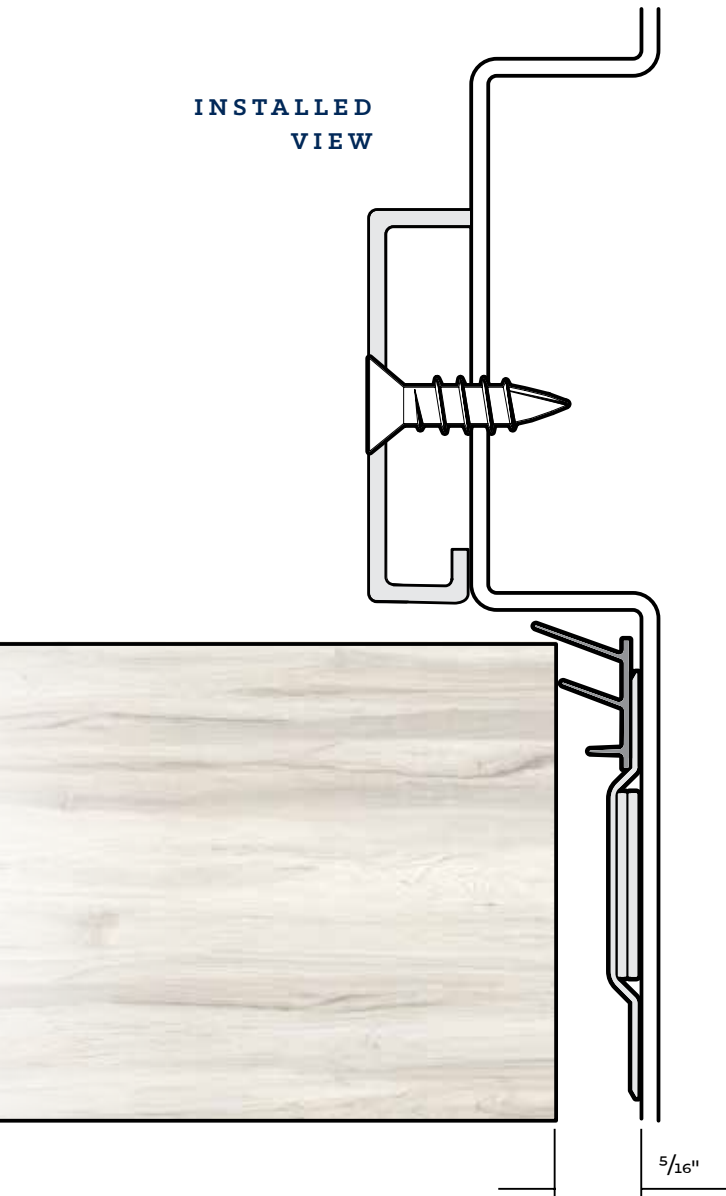


# GAP90™

## FIRE DOOR HEAD AND JAMB GAP SOLUTION

UL Certified Solution for Fire Doors with Excessive Clearance Between Door and Frame Over 1/8", up to 5/16".

INSTALLED  
VIEW



### PRODUCT CONSISTS OF:

#### 9945

Steel Stop Extender

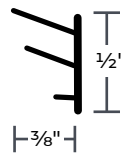
- ▶ 16-Gauge, Gray Primer Finish
- ▶ Furnished with #10 X 1" TEK SMS
- ▶ Patent No.: US9,273,510B2
- ▶ Embossed with **UL Mark**

#### 5075

Self-Adhesive TPE Seal

5075B BROWN

5075CL CLEAR\*

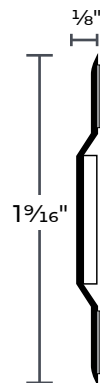


#### 9400

NGP-Edge® Intumescent Seal with PVC Cover

9400 GRAY

9400DKB BROWN



90-Minute rated UL Certified Miscellaneous Fire Door Accessory on UL10B and UL10C wood or hollow metal fire doors.

An NGP Strike Shim 9275 or 9225 may also be required for proper latchbolt engagement.

Doors with parallel arm closers — use 9990 Fire Door Top Gap Solution.

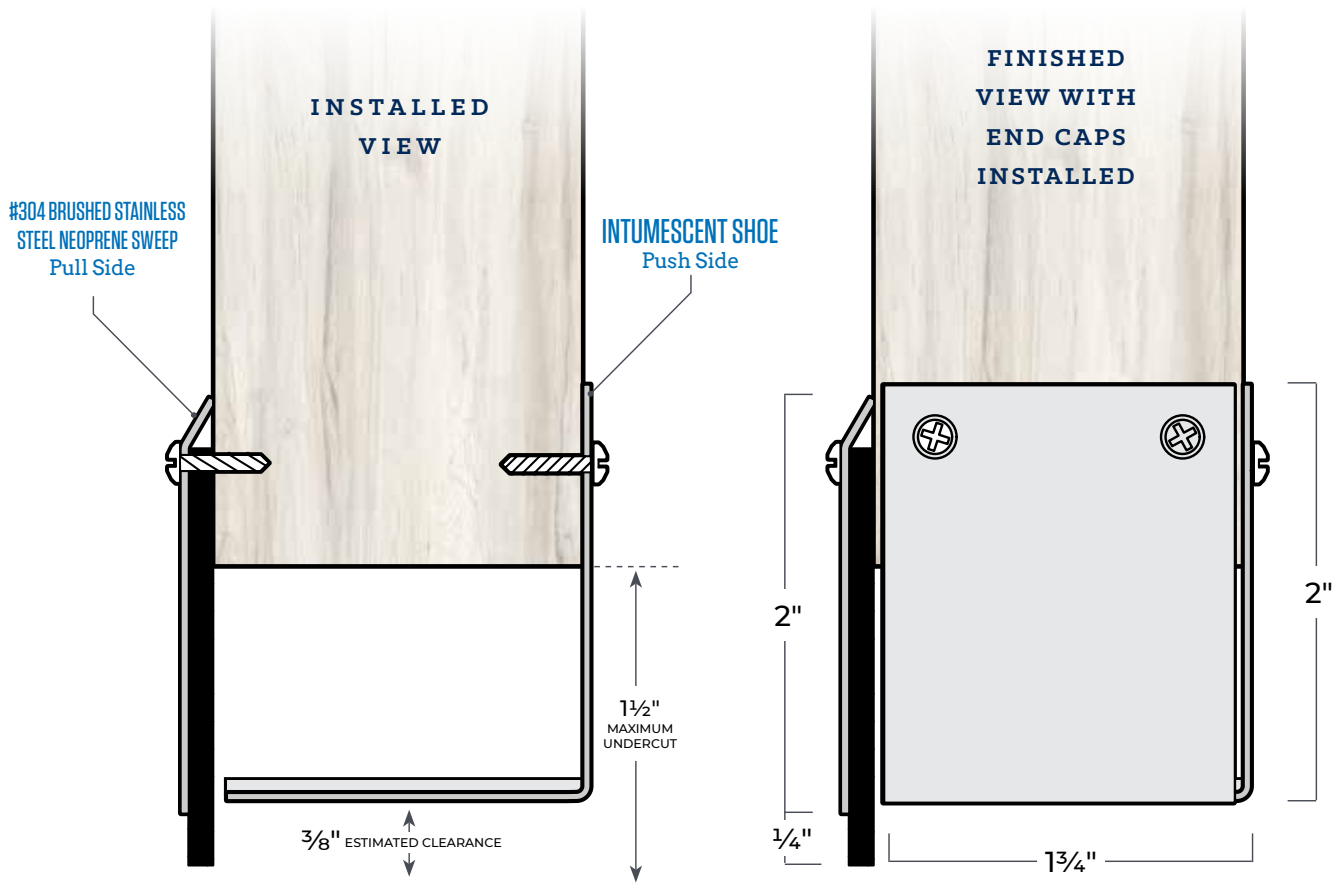
GAP90™ INCLUDES 9945, 9400, 5075CL

GAP90DKB™ INCLUDES 9945, 9400DKB, 5075B

Available in 36", 48", 84" and 96" Lengths

# 9590

## FIRE DOOR BOTTOM GAP SOLUTION



## PRODUCT INFORMATION

### UL Certified for Door Bottom Gaps — Measuring up to 1 1/2".

- Restricts the passage of smoke
- 90-Minute Rated — for use on UL10B and UL10C wood or hollow metal fire doors
- Patent Pending
- Available in 36" and 48" lengths
- Non-handed

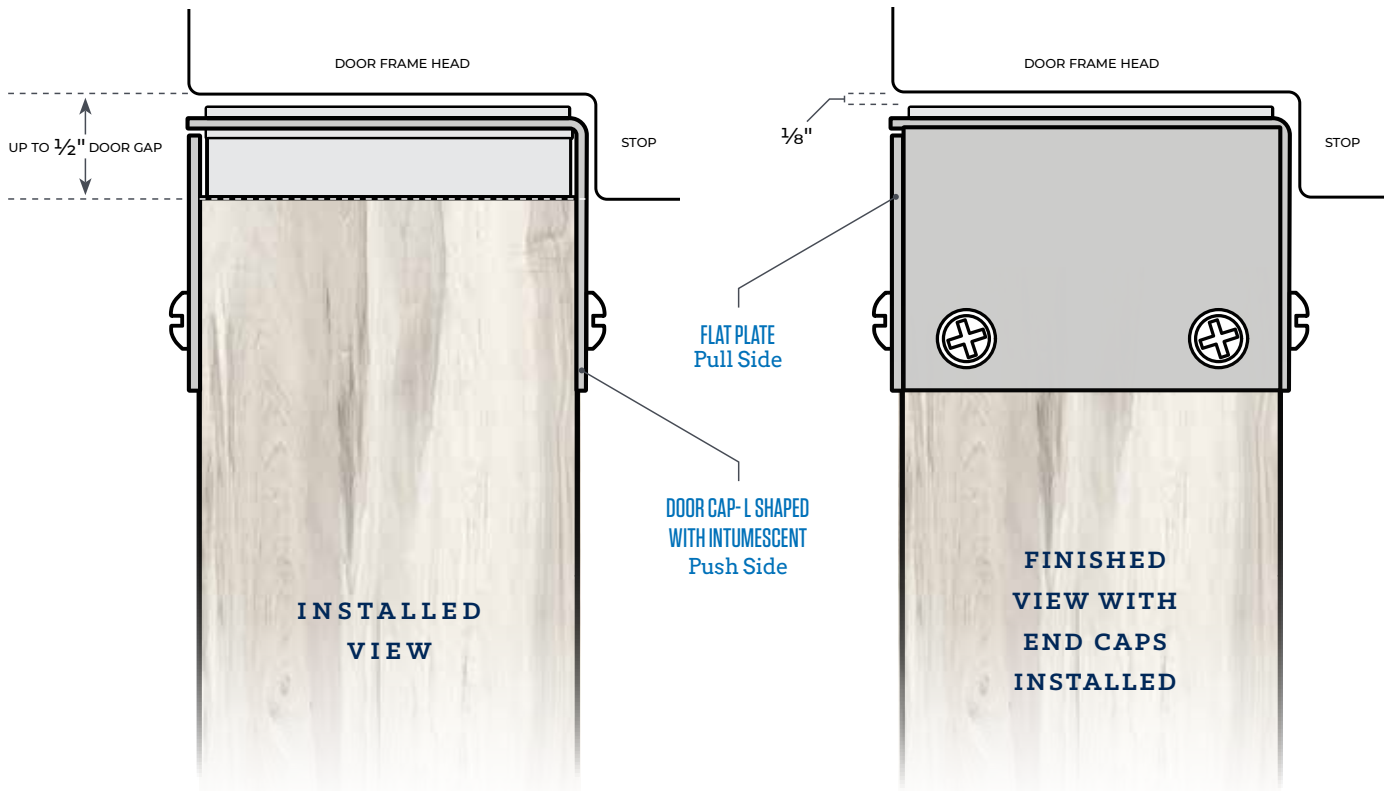
### PRODUCT CONSISTS OF:

- + #304 Brushed Stainless Steel Neoprene Sweep - Pull Side
- + #304 Brushed Stainless Steel Intumescent Shoe—Push Side
- + #304 Brushed Stainless Steel End Caps
- + #6 x 3/4" Stainless Steel SMS Furnished  
*Brushed stainless steel  
Neoprene is black*



# 9990

## FIRE DOOR TOP GAP SOLUTION



## PRODUCT INFORMATION

### UL Certified for Door Top Gaps — Measuring up to 1/2\".

- ▶ 90-Minute Rated— for use on UL10B and UL10C wood or hollow metal fire doors
- ▶ Recommended for doors with parallel arm closers
- ▶ Patent Pending
- ▶ Available in 36\" and 48\" lengths
- ▶ Brushed stainless steel
- ▶ Non-handed

### PRODUCT CONSISTS OF:

- + #304 Brushed Stainless Steel Flat Plate - Pull Side
- + #304 Brushed Stainless Steel Intumescent Cap—Push Side
- + #304 Brushed Stainless Steel End Caps
- + #6 X 3/4\" Stainless Steel SMS Furnished

# FREQUENTLY ASKED QUESTIONS

## GAPS—WHAT DOES THE CODE SAY?

**NFPA 80** (the code standard for fire doors) states that fire doors must be inspected on an annual basis. Maximum allowable perimeter gap is 1/8" for wood doors, 1/8" +/- 1/16" for metal doors. Maximum allowable door bottom gap is 3/4". Gaps that exceed these maximum allowable tolerances result in a non-compliant fire door that needs to be repaired.

## GAPS—PERIMETER VS. DOOR BOTTOM?

Perimeter gaps in doors are the distance between the edge of the door and door frame as measured on the pull side of the opening. Door bottom gaps are the distance between the bottom of the door and the finish floor.

## GAPS—WHY ARE THEY IMPORTANT?

Proper gap tolerances ensure that the door will perform as it is intended. Gaps that are outside of tolerance can lead to compromised fire door integrity in a fire situation as well as not allowing the fire door latching mechanism to engage fully as it is required to do by code.

## REPAIRS—WHAT DOES THE CODE REQUIRE?

Separate from the FDAI Inspection Log; a Maintenance Log is required to be kept with record of repairs to each door. It should include specific product information and certification for products applied that solve issues like excessive gaps.

## REPAIRS—WHERE IS GAP90™ SOLUTION REQUIRED?

GAP90™ is only needed in areas where gaps exceed compliance. It is often aesthetically desirable to run the Steel Stop Extender (9945) full length of head or jamb, while applying the Intumescent (9400/9400DKB) and TPE Seal (5075CL/5075B) where the gap is excessive.

## UL MARK—ARE THE PRODUCTS MARKED?

**GAP90™:** Yes, the Steel Stop Extender (9945) is embossed with the UL Certified Mark and required category ID.

**9590/9990:** Yes, the Stainless Steel components are each embossed with the UL Certified Mark and required category ID.

## UL MARK—WHAT DOES IT INCLUDE?

The 'official' **UL Mark** is the UL Shield & Category ID – POSITIVE PRESSURE TESTED MISCELLANEOUS FIRE DOOR ACCESSORY. For information regarding the special nature of GAPGUARD™ applications including all required components refer to the installation instructions.

## UL MARK—WHERE IS THE OFFICIAL MARK & COMPREHENSIVE INFO?

GAPGUARD™ installation instructions included in each set contain the 'official' **UL Mark**, category ID, and comprehensive information regarding application and installation of all components. Installation Instructions are also available on [ngp.com](http://ngp.com).

## GAP90™—HOW DOES IT CLOSE THE GAP?

With GAP90™ installed – the excessive gap will still be visible. GAP90™ is tested and certified for use on doors WITH excessive gap(s) as it allows them to successfully pass up to a 90 minute UL10C positive pressure fire endurance test and required hose stream test.

## WHAT SOLUTION IS RECOMMENDED FOR THE MEETING EDGE OF PAIRS?

Use steel hinge shims behind the hinges to shift the door(s) toward the center and close the gap between the meeting edges. If this causes an excessive gap at the hinge jamb edge(s), use GAP90™ at the hinge jamb(s).

Continuous Hinges may also be used to re-hang doors with proper gap at meeting-edge.

## HOW TO APPLY GAP90™ TO DOOR FRAMES WITH HOSPITAL STOPS?

The intention of the hospital stop is to allow for easy cleaning of the area where the frame meets the floor. The Steel Stop Extender component (9945) should stop at the miter for the same reasons as the actual hospital stop. The Intumescent component (9400/9400DKB) should continue to the bottom of the frame. Optionally, the TPE Seal (5075CL/5075B) may stop at the miter or continue to the bottom of the frame.

## MAY GAP90™, 9590 OR 9990 BE MODIFIED UNDER THE 90-MINUTE CERTIFICATION?

Yes, GAP90™, 9590 and 9990 may be prepped to accommodate existing door hardware. UL has certified the modification of these products:

**GAP90™:** Certified for on-site modifications around rim exit device strikes.  
(see *installation instructions*)

**9590/9990:** Certified for on-site modifications around concealed vertical rod exit device latches or automatic flush bolts.  
(see *installation instructions*)





**NATIONAL GUARD PRODUCTS, INC.**

---

4985 East Raines Road | Memphis, TN 38118  
Phone: 800-647-7874 | Fax: 800-255-7874  
orders@ngp.com | quotes@ngp.com

**ngp.com**